



**COLLET
CHUCK**

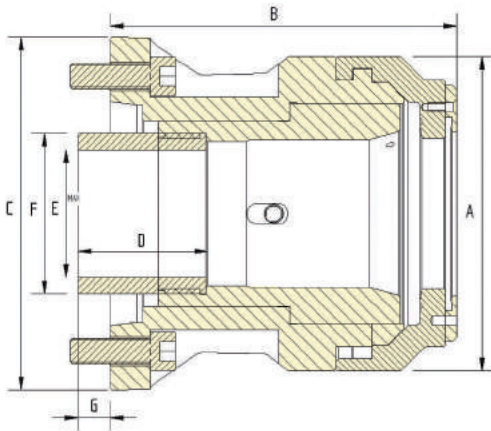
Quick Change Collet Chucks



DIRECT MOUNT series

Standard Features

- Quick change chuck design for first or second operation.
- Ideally suited for use with barfeeders.
- Fixed length collet - no part movement.
- Quick change cap with safety catch.
- Uses varibore, spring and master collets.
- Exceptional accuracy in small package.



Collet Chuck

Specifications		QD-CRL42 DIN	QD-CRL60 DIN	QCRS66 Inch	QCRS80 Inch	QCRL80 DIN
Gripping Range - Round	Max mm	42	60	66	80	80
	Min mm	4	4	3	12	12
Collet Increment	mm	2	4	3	3	3
Sleeve Stroke	mm	7	7	10	12	12
Max Input Force	kN	25	30	38	45	45
Max Gripping Force	kN	55	60	84	78	78
Max Speed (r.p.m)	min ⁻¹	7100	6300	4500	4500	4500
Net Weight	kg	10	20	24	29	37
Matching Cylinder		S1246	S1552	S1875	S2091	S2091
Collet Ref	Varibore	D-673	D-677	B-285	D-175	D-660
	Spring	D173E	D185E	-	-	D-193E

Dimensions	QD-CRL42	QD-CRL60	QCRS66		QCRS80	QCRL80
Mount	A5	A6	220 x 6	A8	A8	A8
A	113	143	162		196	196
B	142	170	158	152	170	221
C	135	165	230	220	220	220
D	60	60	80		80	80
E Max	M58 x 2.0	M75 x 2.0	M90 x 2.0		M90 x 2.0	M90 x 2.0
F	65	82	100		100	100
G Max	23	20	19	25	20	20
G Min	16	13	9	15	8	8