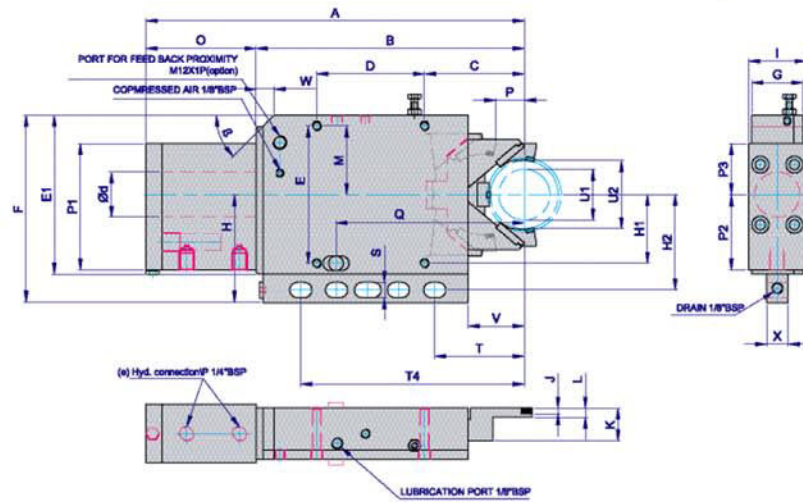
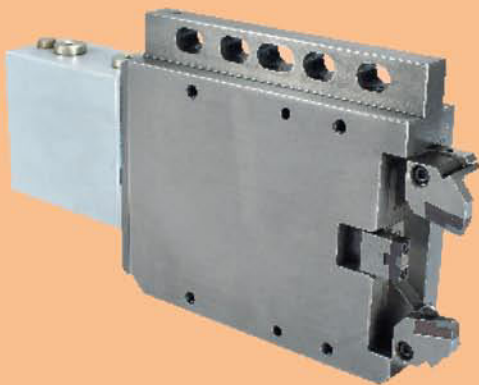


Model: AS (Steady Rest With Retractable Arms)



Steady Model



	AS125	AS235	AS260	AS460	AS6011	AS5514
A	338.5	333.5	355	333.5	675.5	650
B	236.5	236.5	236.5	236.5	536.5	565
C	88	88	88	88	175	295
D	95	95	95	95	260	135
E	121	121	121	121	254	254
E1	140	140	140	140		
F	165	165	165	165	285	285
G	45	45	45	45	69	65
H	95	95	95	95	142.5	142.5
H1	60.5	60.5	60.5	60.5		
H2	84	84	84	84		
I	51	51	51	51	62.5	64
J	5	5	5	5	5	5
L	10	8	8	8	12	10
K	19	29	29	29	26	23
M	60.5	60.5	60.5	60.5		
O	102	97	97	97	139	85
P	33.5	28.5	28.5	28.5		
P1	92.5	92.5	92.5	92.5		
S	13.5	13.5	13.5	13.5	M16	M16
T	79	79	79	79		
T4	197	197	197	197		
V	49.5	49.5	49.5	49.5	140	185
W	16	16	16	16	48.5	96.5
U1	10	20	20	45	60	55
U2	25	35	60	60	115	142
d	40	40	40	40	50	40
e	1/4"	1/4"	1/4"	1/4"	1/4"	1/4"
bar	4-25	4-25	4-25	4-25	10-35	4-35
mm	0.01	0.01	0.01	0.01	0.01	0.01
mm	0.002	0.002	0.002	0.002	0.002	0.002
kg	35	35	35	35	55	60

Cetering Ranges

Cylinder bore.

Hyd. Connection. (BSP)

Standard operating pressure

Max. operating pressure

Centering accuracy over the whole clamping range

Repeatability

Weight Approx.