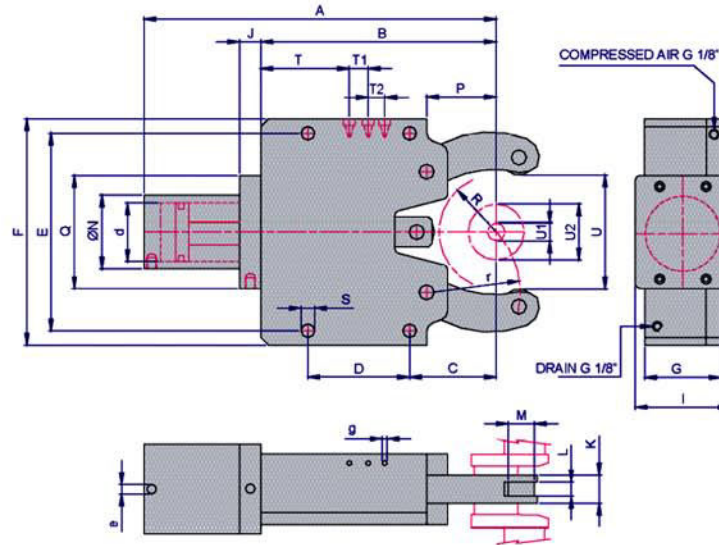


Model: KRHS (For Crank Shaft Machining)



Standard Features:

- Safety Valve
 - Provision for max. opening feedback
 - 1 set swarf guard 3-piece
 - Provision for compressed air connection
 - Provision for centralized lubrication
- Optional Features:
- Provision for coolant flush

		KRHS315P	KRHS520D	KRHS528C	KRHS839	KRHS222	KRHS422	KRSH429	KRHS419	KRHS520K
A		497	620.5	730	804	279	621	621	621	613.5
B		331	442	515	595	189	437	437	437	442
C		138	180	178	255	70	146	146	146	180
D		135	210	270	270	85	240	240	240	210
E		266	330	400	400	170	365	365	365	330
F		300	370	450	440	190	400	400	400	370
G		80	67	102	110	57	79	79	79	70
I		102	118	102	108	69	72	72	72	100
J		31	40	37	37		33	33	33	31
K		22	26	32	40	22	22	29	19	29
L		14	16	20	20	12	13	16	10	18
M		35	40	62	62	35	52	52	52	52
N (dia)		137	132	147	137		122	122	122	132
P		114.5	160	160	216.5	58.5	128	128	128	160
Q		186	196	186	184	124	162	162	162	160.5
r		139.5	187.5	210	252	73	172	172	172	187.5
S		18	20	23	23	14	23	23	23	20
T		113	170	183	227	57.5				170
T1		25	27	32	23	17				27
T2		25	27	32	23	17				27
U1		40	45	70	80	8	30	30	30	40
U2		85	100	150	200	101	245	245	245	200
Clamping ranges without chip guard										
Max. axial opening										
U		220	236	323	393	105	260	260	260	212
U1		40	45	70	80	8	30	30	30	50
U2		85	100	150	200	101	245	245	245	100
Centering range without chip guard										
U		220	236	323	393	105	260	260	260	212
Eccentric throw (R value)										
R		110	120	155	197.5	55	127	127	127	108.2
Cylinder bore.										
d		80	80	80	80	50	60	60	60	80
Hyd. Connection (BSP)										
e		1/4"	1/8"	1/4"	1/4"	1/4"	1/4"	1/4"	1/4"	1/4"
Lubrication ports										
g		M8 X 1	M8 X 1	M10 X 1	M10 X 1	1/8"	1/8"	1/8"	1/8"	1/8"
Standard operating pressure	bar	6-30	6-40	5-55	5-55	5-70	6-50	6-50	6-50	1-40
Max.operating pressure	bar	35	45	60	60	75	55	55	55	45
Clamping press. / roller at 6 bar	daN	100	100	100	100		56	56	56	140
Max.clamping pressure / roller.	daN	500	1000	1400	1400	450	560	560	560	1000
Centering accuracy over the whole clamping range.	mm	0.04	0.05	0.05	0.05	0.02	0.04	0.04	0.04	0.05
Repeatability	mm	0.01	0.01	0.01	0.01	0.005	0.01	0.01	0.01	0.01
Max. peripheral speed.	m/min	500	525	350	350	800 m/min	700m/min	700m/min	700m/min	865m/min
Max. peripheral speed at half max. clamping press.	m/min	850	865	850	850	18.5	86	86	86	80